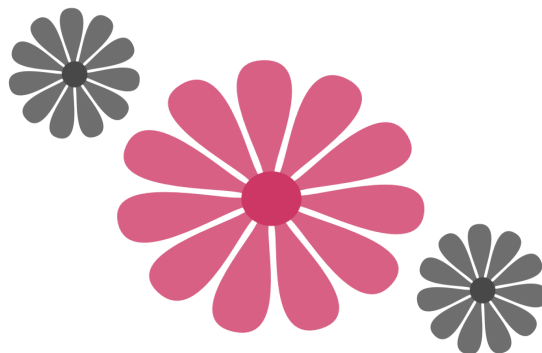
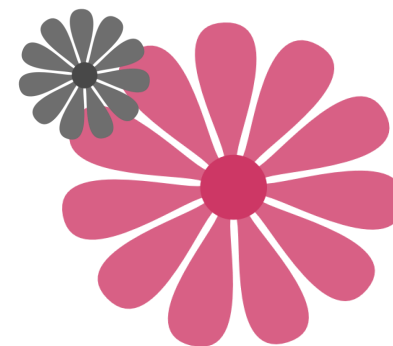


Regional Competitions

2011



CHORUS COMPETITOR E-PACKET



Important information in preparation for Regional Competition.

 **Important Reminders** Pg. 3

 **Entering Competition** Pg. 3

- Dates, Deadlines, and Procedures
- Entry Fees
- Entry Deadline
- How to Enter

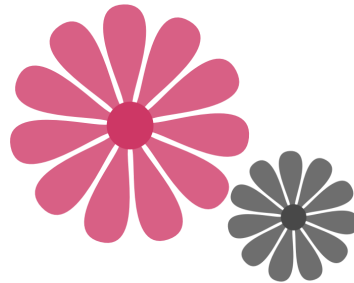
 **Performing for Evaluation Only** Pg. 4

- Performance Level Guidelines
- Awards
- Mic Tester
- Evaluation by Videorecording

 **Qualifying for International** Pg. 5

- Eligibility
- Wildcards
- Harmony Classic
- Riser Configurations

 **Documents to Review** Pg. 6

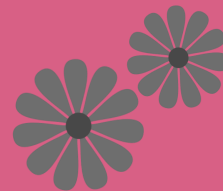


Little known fact:

Online competition registration saves you time wondering if your entry form arrived in time.

Don't worry, be happy! Save your valuable time for more important life pleasures, like rehearsals.

Online registration begins December 15, 2010.



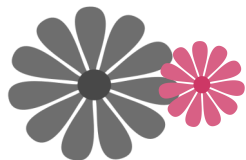
QUICK LINKS TO RESOURCES

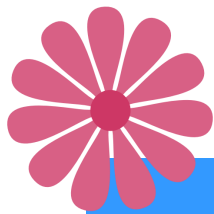
The links listed below will navigate you through the documents/information you need to register for regional competition. Just click on the title of the document to open the link. The resources are further explained on page 6.

- [2011 Chorus Entry Form](#)
- [Regional Chorus Competition Timetable](#)
- [Eligibility Requirements for Regional Chorus and Quartet Competition](#)
- [2011 Schedule of Dates and Deadlines](#)
- [List of Competing Members Verification Form And Member List](#)
- [Basic Criteria for Public Performance](#)
- [Evaluating Your Contest Performance](#)
- [Performance Level Guidelines](#)
- [Guidelines for Evaluation by Videorecording](#)
- [Single-Copy Sheet Music List](#)
- [Copyright Matters/Q & A](#)
- [Competition Handbook](#)



Continue to Contest Info





Important Reminders/Contest Info

2011

Important Reminders

- Order of Appearances are randomly drawn. Submitting your entry form early does not affect your position in the draw. Late fees will be added for entries received after the deadline.
- Online registration is available beginning December 15 and access is limited to the chorus President, Director, or Treasurer on file at headquarters.
- Competition fees are \$150, with \$100 late fee being added for entries received after the deadline.
- If you do not receive an email confirmation within 10 business days after your entry form was mailed, please email [Ruth Cameron](#) at headquarters.
- Chapter personnel forms may take up to fourteen (14) days to process. Please keep this in mind when preparing your paperwork.
- If you have questions specific to your regional convention, please contact the Events Coordinator (EVC) or Chair of the Regional Convention (CRC). If you have questions regarding competition, please feel free to contact the [Music Services Department](#) at international headquarters.
- [Competition Handbooks](#) are available online. [Click here](#) to download.

Entering Competition

Dates, Deadlines, and Procedures:

A minimum of fifteen (15) members not including the director(s) must be on stage when competing in a regional chorus competition. A chorus with fewer than 15 members on stage performs for evaluation only and will receive a written evaluation of their performance from each judge, provided that all other requirements for entering regional chorus competition have been met.

In order to compete, any chapter delinquent in paying its regional assessment sixty (60) days prior to its regional competition will not be in good standing with the region and will be ineligible to compete.

Entry Fees:

Chorus Registration \$150
(up to 60 days prior to competition)

Chorus Late Fee \$100
(59-45 days prior to competition—in addition to standard registration fees)
Entries received after 45 days prior to contest will not be processed.

Riser Change Fee:

Any change in your riser configuration after the order of appearance has been drawn will result in a \$50 fee.

Entry Deadline:

The entry deadline is the date your form **MUST BE RECEIVED** at international headquarters. Refer to the Dates and Deadlines document to view your region's schedule.

How to Enter:

Online

Competition entries can be completed online by [clicking here](#).

Online registration will be available beginning December 15, 2010. To register online, you must be the chorus President, Director, or Treasurer on file at headquarters.

By Mail or Fax

You may download and print an [entry form here](#).

Both the entry fee and completed form must be received by international no later than sixty (60) days prior to your regional competition to avoid a late fee. You must allow ample time for the materials to be processed through the postal system. Remember, it could take 8-14 days for regular mail to reach international headquarters.



**Continue to more
Contest Info**



**Return to
Table of Contents**





Regional Contest Information

2011

By Mail or Fax (cont'd)

All mailed entry forms should be addressed to:

Sweet Adelines International
Attn: Music Services
9110 S. Toledo
Tulsa, OK 74137-2700

Or by fax to: 918.388.8083

Payment:

Include payment in U.S. funds only. The following methods of payment will be accepted:

Check (mail only)
Visa, Mastercard, or Discover

Please do not mail a form that has already been faxed, this could result in duplicate charges. Also be sure to include your region number and chorus ID number.

Withdrawal:

All competition registration fees are non-refundable. Anyone withdrawing must email [Ruth Cameron](#) or [April Slezak](#) or submit notification to Music Services in writing.

PLEASE NOTE: The International Board of Directors continues to reaffirm the policy requiring that only copyright cleared music be sung at the regional competitions. By signing the entry form, choruses

warrant that they have obtained appropriate clearance permission for the arrangements they plan to sing.

You will want to review competition procedures in the Competition Handbook. In accordance with these procedures, any Chapter that is delinquent in paying regional assessments will not be in good standing with the region, and will be ineligible to compete.

For a complete explanation of the requirements and category weights of each of the four judging categories, you may refer to the *Judging Category Description Book*.

Performing for Evaluation Only

The International Board of Directors provides that all choruses, including prospective choruses, current regional champion and current international champion, may perform in a regional competition for "evaluation only" by so indicating on the entry form submitted to international headquarters. Please read the following procedures carefully:

- Chorus will indicate on the entry form its desire to perform for evaluation only and not for placement.
- The current regional champion chorus, current international wildcard choruses

and/or the current international champion chorus may enter the regional chorus competition for evaluation only.

A current regional champion chorus' bowout performance will not be evaluated. The chorus must perform a second time at the beginning or end of the competition for evaluation.

- Prospective choruses may only enter regional chorus competition for evaluation.
- Chartered chapters in regions that hold biennial competitions may petition the Regional Management Team to be allowed to compete for evaluation only in another region's competition during their region's off year.
- Each judge will write comments on her category scoresheets and indicate a level score for each song; **no numerical score or total score will be given.** Level scores will be considered confidential and not published.
- Choruses performing for evaluation only, unless serving as mic tester or host chorus, will automatically become part of the drawing for first appearance.





Regional Contest Information

2011

Performing for Evaluation (cont'd)

- Only the competition assistance/host chorus has the option of competing either first or last for evaluation only.
- Choruses performing for evaluation only will have fulfilled the three-year competition requirement.

Awards:

Choruses competing for evaluation only will not be eligible for awards presented by the international organization or for regional awards determined by total score or final placement.

Mic Tester:

A chorus serving as mic tester may also perform for evaluation only. The evaluation only performance will be scheduled at the end of the contest. Mic testers also performing for evaluation only must complete the entry form and pay the entry fee.

Evaluation by Videorecording:

The regional competition policies give choruses the option of evaluation by videorecording. Choruses choosing this option are required to pay the competition entry fee. The official panel will evaluate the videorecordings after viewing the level DVD prior to judging the contest. Evaluation by videorecording doesn't fulfill the existing requirement that choruses must compete every three years to maintain their charters. For complete evaluation guidelines, [click here](#).

Chapter Membership Renewal:

As a reminder, a chorus must have competed at least once in a regional or international competition in the preceding three (3) years in order to renew chapter membership. This means that your chorus must have competed 2009, 2010, or 2011, in order to renew chapter membership for the 2011/2012 fiscal year.

Riser Configurations:

Each region is given the option of using the standard riser configuration, the alternate riser configuration, or both, at regional competition. If the two riser configurations are offered in your region, choruses are allowed to make their own decision regarding which riser configuration they will compete on. PLEASE NOTE: If your chorus does not designate on the registration form which riser configuration it desires, your chorus will automatically be placed on the standard riser. Any change in your selection of riser configurations after the order of appearance will result in a \$50 fee.

- The [Standard Riser configuration](#) has an inverted center and is more appropriate for larger choruses.
- The [Alternate Riser configuration](#) has no inverted center and would be appropriate for smaller choruses.

Each region now has the option to choose which riser configuration will be used first. **Check with your region for the configuration that will be first.**

Qualifying for International

The 2011 Regional Chorus Champions are eligible to compete in the 2012 International Chorus Competitions to be held October 29-November 3, 2012, in Denver, Colorado.

Wildcards:

Wildcards are based on this criteria:

- The five highest scoring regional second place choruses will be eligible to compete at the next year's international chorus semifinals;
- The next highest scoring regional second place chorus will be invited if an eligible chorus chooses not to compete;
- Any wildcard chorus that qualifies for the international chorus semifinals by virtue of score and chooses to compete in next year's international competition will not be allowed to compete for placement at regional competition;
- Announcement of wildcards will be made after all regional contests are complete.

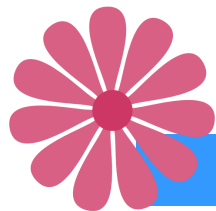


**Continue to more
Contest Info/Documents**



**Return to
Table of Contents**





2011 Contest Info/Documents

2011

Harmony Classic:

For choruses qualifying for Harmony Classic, the contest is held in conjunction with international convention

From the first-place mid-size and first-place small chorus divisions, the five highest scoring choruses will be invited to compete in the Harmony Classic competition at the 2012 International Convention, October 29—Nov. 3, 2012, in Denver, Colorado. Choruses that qualify for both Harmony Classic and the international chorus semifinals will be required to choose one contest in which they will compete. Choruses may not compete in both Harmony Classic and the international chorus semifinals in the same year.

The maximum number of singers for Harmony Classic competition has been increased to 40 for Division A, and 75 singing members for Division AA. While the qualification for Harmony Classic remains at 15-30 singing members for Division A, and 31-60 members for Division AA at the regional competition level, this will be important to note should your chorus be invited to compete at Harmony Classic.

Refer to the [Competition Handbook](#) for additional qualifications and restrictions.

Documents to Review:

The resources/links section on the Table of Contents page contain the following



important documents. These are further explained below the link to each document. Click on the title of the document to open.

2011 Entry Form

Online is the quickest, most convenient way to register. However, your entry may be submitted by hard copy by using this form.

Regional Chorus Competition Timetable

Timetable of dates beginning with the first mailing/email to all registered quartets through the end of regional competition.

Eligibility Requirements for Regional Chorus and Quartet Competition

Information for choruses/quartets to determine eligibility for regional competition.

2011 Schedule of Dates and Deadlines

This guide is used from the beginning/ mailing of packets to quartets/choruses through the quartet/chorus competition dates.

Basic Criteria for Public Performance

Criteria used in determining if a prospective or established chapter may perform in public.

Evaluating Your Contest Performance

An informative guide on how you and the judges evaluate your contest performance

Performance Level Guidelines

This form, broken down by judging category, will help you evaluate your scoreheet comments.

Copyright Matters/Q & A

Instructions from Carol Schwartz, Director of Music Services, addressing copyright

issues and an informative guide on copyrights/arrangements of music.

Single-Copy Sheet Music

List of single-copy sheet music available from the international sales department.

Regional Dates and Deadlines

The schedule of mailings from international and entry deadlines for your region. Your region will send additional mailings listing regional deadlines such as housing and convention registration. Please note the 60-day entry deadline. It is your region's responsibility to notify Music Services if a member has not paid their regional assessment and is not in good standing with the region by this deadline. If it is paid, Music Services must receive notification from the region that the member is in good standing and eligible to compete.

List of Members/Verification Form

Turn in to region at your chorus briefing.

Competition Handbook

Explains official rules and regulations for all competitions.

 **Return to Table of Contents**

