



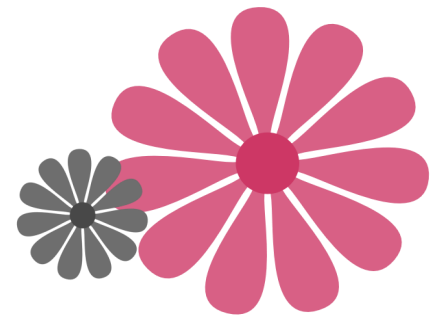
# **Regional Competitions**

---

**2011**



## **Quartet Competitor E-Packet**



## Important information in preparation for Regional Competition.


 Important Reminders Pg. 3

 Entering Competition Pg. 3

- Dates, Deadlines, and Procedures
- Entry Fees
- Entry Deadline
- How to Enter

 Performing for Evaluation Only Pg. 4

- Awards
- Mic Tester

 Qualifying for International Pg. 4

- Eligibility
- Wildcards

 Documents to Review Pg. 5

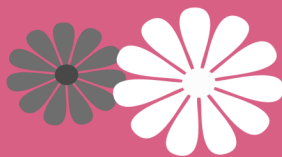


## *Little known fact:*

Online competition registration saves you time wondering if your entry form arrived in time.

Don't worry, be happy! Save your valuable time for more important life pleasures, like rehearsals.

Online registration begins December 15, 2010.



## QUICK LINKS /RESOURCES

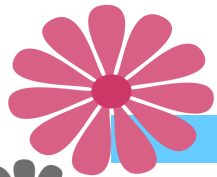
The links listed below will navigate you through the documents and information you need to register for regional competition. Just click on the title of the document to open the link. The resources are further explained on page 5.

- [2011 Entry Form](#)
- [Regional Quartet Competition Timetable](#)
- [Eligibility Requirements for Regional Quartet and Chorus Competition](#)
- [2011 Schedule of Dates and Deadlines](#)
- [Basic Criteria for Public Performance](#)
- [Evaluating Your Contest Performance](#)
- [Performance Level Guidelines](#)
- [Copyright Matters and Q & A](#)
- [Single-Copy Sheet Music List](#)



Continue to Contest information





# 2011 *Regional Contest Information*



## Important Reminders

- Order of Appearances are randomly drawn. Submitting your entry form early does not affect your position in the draw. An additional \$100 late fee will be added to entries received after the deadline.
- Online registration is available beginning December 15 at this link:
- Online registration access is limited to the quartet contact on file at headquarters.
- If you do not receive an email confirmation within 10 business days after your entry form was mailed, please email [Ruth Cameron](#) at headquarters.
- Competition Handbooks are available online. [Click here](#) to download.

## Entering Competition

### Dates, Deadlines, and Procedures:

In order to compete, the quartet name and personnel must be registered with Sweet Adelines International headquarters, and be in good standing with the chapter(s) and region(s). Quartets registering after January 15 will be assessed an additional \$50.00 processing fee and must be registered prior to your region's late entry date (45 days prior to the regional quartet contest date.)

**Your competition entry will not be processed until the quartet registration is complete.**

### Entry Fees:

**Quartet Registration** \$100  
(up to 60 days prior to competition)

**Quartet Late Fee** \$100  
(59-45 days prior to competition—in addition to standard registration fees)  
Entries received less than 45 days prior to contest will not be processed.

### Entry Deadline:

The entry deadline is the date your form must be **RECEIVED** at international headquarters. Refer to the Dates and Deadlines document to view your region's schedule.

### How to Enter: Online

Competition entries can be completed online by [clicking here](#). Or, you may download and print an entry form here: [2011 Entry Form](#). Online registration will be available beginning December 15, 2010. To register online, you must be the quartet contact on file at headquarters.

### By Mail or Fax:

- Both the entry fee and completed form must be received by international no later than sixty (60) days prior to your regional competition to avoid a late fee.

- You must allow ample time for the materials to be processed through the postal system. Remember, it could take 8-14 days for regular mail to reach international headquarters. All mailed entry forms should be addressed to:

Sweet Adelines International  
Attn: Music Services  
9110 S. Toledo  
Tulsa OK 74137-2700

Or by fax to: 918.388.8083

### Payment:

Include payment in U.S. funds only. The following methods of payment will be accepted:

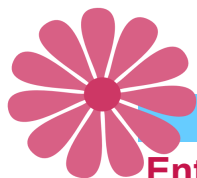
Check (mail only)  
Visa, Mastercard, or Discover

**Please do not mail a form that has already been faxed, this could result in duplicate charges. Also please be sure to include your quartet ID number.**

### Withdrawal:

All competition registration fees are non-refundable. Anyone withdrawing must notify [Ruth Cameron](#) or [April Slezak](#) in Music Services in writing.





# 2011 *Regional Contest Information*

## Entering Competition

### How to Enter: (cont'd)

**PLEASE NOTE:** The International Board of Directors continues to reaffirm the policy requiring that only copyright cleared music be sung at the regional competitions. By signing the entry form, quartets warrant that they have obtained appropriate clearance permission for the arrangements they plan to sing.

A chapter-at-large member may belong to a quartet and compete in regional competition providing the quartet is registered with international headquarters. She must be current on her international per capita fees and regional assessment dues by the regional entry deadline.

You will want to review competition procedures in the [Quartet Handbook](#) and the [Competition Handbook](#). In accordance with these procedures, any Chapter-at-Large member who is delinquent in paying her regional assessment will not be in good standing with her region, and will be ineligible for competition as a quartet member.

A member may sing in only one quartet, including the mic-testing quartet, in the same competition

For a complete explanation of the requirements and category weights of each of the four judging categories, you may refer to the *Judging Category Description Book*.

## Performing for Evaluation Only

The International Board of Directors provides that all quartets, current or past international champions or current international semifinalists (placing 2-15), may compete in a regional competition for "**evaluation only**" by so indicating on the entry form submitted to international headquarters. Please read the following procedures carefully:

- Quartet will indicate on the entry form their desire to compete for evaluation only and not for placement.
- Quartets competing for evaluation only will automatically become part of the drawing for first appearance.
- Each judge will write comments on her category scoresheets and indicate a level score for each song.
- **No numerical score or total score will be given.** Level scores will be considered confidential and will not be published.

### Awards:

Quartets who compete for evaluation only will not be eligible for awards presented by the international organization or for regional awards determined by total score or final placement.

Registered quartets in regions that hold biennial competitions may petition your regional Event Coordinator (EVC) and [Carol Schwartz, Director of Music Services](#) at international headquarters to be allowed to compete for evaluation only in another regional competition during their region's off year.

### Mic Tester:

A quartet serving as mic tester may also perform for evaluation only. The evaluation only performance will be scheduled at the end of the contest. Mic testers that are performing for evaluation only must complete the entry form and pay the entry fee.

## Qualifying for International

The 2011 Regional Quartet Champions are eligible to compete in the 2011 International Quartet Competitions to be held October 18-22, in Houston, Texas.

If the 1<sup>st</sup> place quartet withdraws from international competition, the 2<sup>nd</sup> place quartet will be invited. If the 2<sup>nd</sup> place quartet is a wildcard or declines, an invitation will not be extended to other placements.

The wildcard quartet pool will not be announced until after all regional contests are complete.

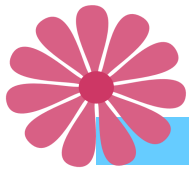


[Continue to Documents to Review](#)



[Return to Table of Contents](#)





# *Documents to Review*

## **Documents to Review**

The resources/links section on the Table of Contents page contain the following important documents. These are further explained below the link to each document. Click on the title of the document to open it.

### **2011 Entry Form**

Online is the quickest, most convenient way to register. However, your entry may be submitted by hard copy using this form.

### **Regional Quartet Competition Timetable**

Timetable of dates beginning with the first mailing/email to all registered quartets through the end of regional competition.

### **Eligibility Requirements for Regional Quartet and Chorus Competition**

Information for quartets to determine their eligibility for regional competition.

### **2011 Schedule of Dates and Deadlines**

Lists important dates and deadline for mailings and entries through competition.

### **Basic Criteria for Public Performance**

Criteria used in determining if a prospective or established chapter may perform in public. The International Board of Directors strongly urge use of this criteria when auditioning quartets.

### **Evaluating Your Contest Performance Sheet**

An informative guide on how you and the judges evaluate your contest performance.

## **Performance Level Guidelines**

Shows a variety of judging categories complete with scores and explanations. Please review the Performance Level Guidelines to help evaluate your scoresheet comments.

## **Copyright Matters and Q & A**

Instructions from Carol Schwartz, Director of Music Services, addressing copyright issues. Copyright Q & A is an Informative guide on copyrights/arrangements of music.

## **Single-Copy Sheet Music**

List of single-copy sheet music available from the international sales department.

## **Regional Dates and Deadlines**

This document shows the schedule of mailings from international and entry deadlines for your region. Your region will send additional mailings listing regional deadlines such as housing and convention registration. Please note the 60-day entry deadline. It is your region's **Event Coordinator's** responsibility to notify Music Services if a CAL member has not paid their regional assessment and is not in good standing with the region by this deadline. If it is paid, Music Services must receive notification from the region the member is in good standing and eligible to compete.

Please note the Music Services Department at headquarters is here to help with any questions you may have about regional competition or quartets. You may contact either [Ruth Cameron](#) or [April Slezak](#).



**Return to  
Table of Contents**

